

TEXAS SIMMENTAL / SIMBRAH NEWS

Over \$10,000 raised in honor of Sally Buxkemper for ASA Foundation

Smith Genetics, Giddings, Texas donated a polled three-quarter Simmental, one-quarter Brahman heifer towards the American Simmental Association's (ASA) Foundation fund in honor of the late Sally Buxkemper.

The young female was auctioned as the first lot at the Simbrah Synergy X Sale, which was hosted by Smith Genetics on September 23rd. The April 2017 heifer sold for \$10,200 to a buyers group that included Simmental and Simbrah breeders, enthusiasts and

promotional companies from across the country. Fred Schuetze, Granbury, Texas spearheaded the drive to bring the group together and make the final bid of \$10,200. The heifer will remain at Smith Genetics and money from all resulting progeny will also be contributed to the ASA Foundation in Buxkemper's honor.

The buying group included: Buzzard Hollow Ranch, Matt Shiel Family, La Muneca Cattle Co., Mike Mallett Simmentals, 6G Ranch, Beth Mercer,

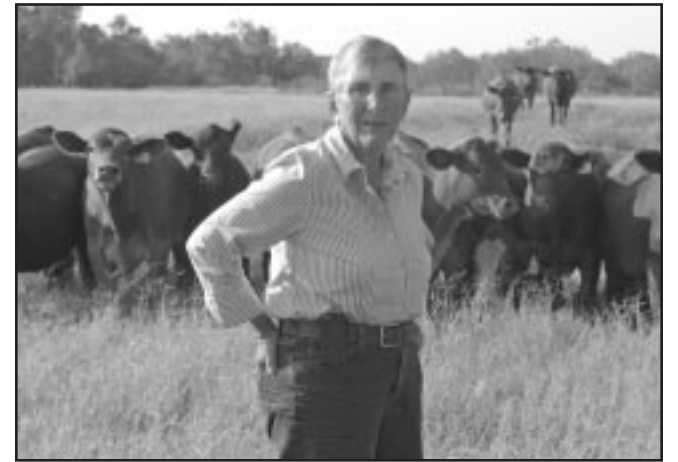
Bob Finch, Gordon Hodges, Jimmy & Kathleen Holliman, Chuck Miller, Tim Curran of Circle Ranch, Lassle Ranch Simmentals, McDonald Farms, Fred Smith, Dale and Paula Miller of Miller Simmentals, Willie and Sharon Altenburg, Bert Moore, Tom & Renee Nelson, Pine Ridge Ranch, Randy and Joy Moody of Little Mountain Simmental, Gordon Jones, Grahmann Land & Cattle, Nichols Farms, J.W. & Carol Brune, Roger & Erika Kenner, Jim & Gail Ligon,

R.A. Brown Ranch, McCrary Farms, Reavis Farms, Inc., Pebble Creek, Monte Cristo, Hallak Ranch, Diamond RF Farms, Burch Farms, 7N Ranch, Triple J Ranch, Temperance Cattle Co., Johnson Cattle Co., The Hollida Co., Genetic Development Center, Roberto Davila, Greg Burden, Southern Livestock Standard and Simbrah World.

Buxkemper was an early proponent of breeding composite cattle, a former ASA Board of Trustee, Simbrah breeder, advocate

for genomic advancement and devoted her life to studying genetics and

working to make genetic evaluation understood and utilized.



Sally Buxkemper

SimGenetics wanted for National ASA Sale

The Fort Worth Livestock Show will be the home of the American Simmental Association's (ASA) National Simmental, Percentage Simmental

and Simbrah Show, Jan. 28th in Fort Worth. The ASA National Sale will also be held on Jan. 27th at the stock show. For additional information on the

sale contact Jered Shipman at 806/983-7226 as deadline for consignments is Oct 15th. To view the premium book and see entry information, visit fwsr.com.

Black Label Sale set for Oct. 14

The Black Label Sale, featuring Simmental, SimAngus, Angus, Charolais and Red Angus genetics

will be hosted by Shipwreck Cattle Co. on Oct. 14th at the ranch in Grandview, Texas at 5 p.m.

For additional details and catalog, visit www.cattleindemand.com.

7P Ranch to hold 42nd Annual Production Sale

Joe Prud'homme and family will once again host their annual production sale at the ranch in Tyler, Texas on Saturday, Oct. 28th. This year's sale is their 42nd consecutive event. The 75 Simmental and SimAngus bulls will sell at

1 p.m., followed by 75 Simmental and SimAngus females. The sale will conclude with a select offering of commercial true F1 Brahman x Hereford and Brangus breed bred heifers. These commercial females sell AI'd to calving

ease Angus bulls.

Catalog and videos of the cattle can be found at www.CattleinMotion.com or 7pranch.com

For more information contact Prud'homme at 903/592-8301.

Headquarters for National Western announced

The DoubleTree Hotel Denver, 3203 Quebec Street will serve as headquarters for the American Simmental Association (ASA) Annual Meeting, Foundation Auction, and ASA Board Meetings.

A special stock show rate of \$115 is available to ASA members; to reserve

your rooms, call 303-321-3333 and ask for the "SimGenetics" block while there is availability. Reservations must be made no later than December 8, 2017 after that date, the quoted flat rate will longer be available. Transportation to the DoubleTree is by train to the Central Park

Station and then shuttle service to the hotel. Once you arrive at Central Park Station, contact the hotel (303-321-3333) and request shuttle service to the hotel. The DoubleTree provides transportation to and from the National Western Stock Show grounds.

60 % Off 50K test for a limited time only

You've come to expect the American Simmental Association (ASA) to leverage all its resources to provide the industry with the best prices and most robust science. The Cowherd DNA Roundup is a perfect example of that service.

Breeders who submit a DNA sample on their entire cowherd can get genomically enhanced EPDs and parentage for \$20/test. Breeders who submit cow weights with either body conditions scores or hip heights get an additional \$5 off per test, for the price of

\$15/sample.

This project marks a major investment from the ASA towards research and development. The \$15 test is only available for the first 15,000 samples with phenotypes submitted. There is no estimate of when the

(Continued on page 26)

Trusted rancher recordkeeping tool available

DENVER -A pocket-sized recordkeeping tool used by cattle producers for more than 30 years is available for 2018. The "Redbook" from the National Cattlemen's Beef Association (NCBA) helps cattle producers effectively and efficiently record their daily production efforts, helping enhance profitability.

The 2018 Redbook has more than 100 pages to

record calving activity, herd health, pasture use, cattle inventory, body condition, cattle treatment, AI breeding records and more. It also contains a Producers Guide for Judicious Use of Antimicrobials in Cattle, Beef Quality Assurance Best Practices and proper injection technique information, as well as a calendar and notes section.

"I'm more comfortable leaving home without my

pocket knife than my Redbook," according to Dan Kniffen, a Pennsylvania beef producer. "The Redbook puts documentation in my shirt pocket and helps me identify potential day-to-day problems with my herd, as well as progress I'm making in efforts to improve it. The challenges I face are more manageable when I have the information for dealing with

(Continued on page 26)



602 FM 1652
Grand Saline, Texas 75140
(405) 780-0372
txsim@aol.com
www.texassimmentalsimbrah.com

BOARD MEMBERS

Greg Burden, president	David Grimes, treasurer	
Casey Buzzard, vice-president	Diane Jolly, secretary/reporter	

Louis Langford	Reese Hagan	Brian Franks
Webb Fields	Jered Shipman	
Joe Seale	Dr. Marty Tanner	

The value of preconditioning calves

Preconditioning is a generic term that means different things to different people and encompasses the different operating procedures that may be applied to a calf prior to shipping. Preconditioning activities may include weaning, vaccinations, dehorning, castration, and starting calves on a high energy diet. Several reasons exist for the cow/calf producer to precondition their calves, but the underlying goal is to increase the value of the calf being sold or the productivity of the calf being retained.

Preconditioning adds weight and health to the calf, which in turn enhances the cow/calf producer's reputation. Most preconditioning programs require 45 days where the calf is bunk broke and the manager follows specified animal health protocols and a nutritional program. Several studies show the decreased morbidity and mortality of preconditioned calves, a higher feedlot performance level, and a higher quality carcass. The economic justifications for preconditioning are harder to quantify though as the additional economic value is dependent on several factors.

One of the biggest economic justifications is the added weight. Total revenue for cow/calf producers is largely dependent on calf weight. The added calf weight from a preconditioning program typically adds additional dollars in the cow/calf producer's pocket. Obviously, the management challenge is to find a feed ration where the cost of gain is less than the value of additional pounds. Typically, the preconditioned calf has approximately half the shrink experienced by the non-preconditioned calf. The decreased shrink will also help keep the value higher than the cost. (1) Nonetheless, the additional value will be somewhat dependent on the current market and whether the classic price slide is being experienced. Note also that preconditioning will typically delay the sale of the calf until November or December, which can have a slight seasonal price increase.

Another value to preconditioned calves is the

increased ability to mingle your calves with another producer's calves through a marketing agent. Typically, the commission rates are lower in this scenario.

Although, keeping the calves an additional 45 days to precondition increases feed costs, labor costs, death loss, interest, etc., the premiums received for the preconditioned calves is a pretty convincing argument to precondition. This

premium continued to increase through 2014. In the current environment preconditioning may become even more important, not necessarily due to the premium received for preconditioning, but because the cow/calf producer can avoid the discount received for calves with unknown health status of non-preconditioned calves. Buyer interest in preconditioned calves is expected to

(Continued on page 26)

• CALENDAR •

- Oct. 7-30th Annual La Muneca Jr. Round Up & Futurity, Linn, Texas
- Oct. 20-State Fair of Texas Pan Am Simbrah Show, Dallas, Texas
- Oct. 21-State Fair of Texas Junior Simbrah Show, Dallas, Texas
- Oct. 28-7P Ranch Annual Production and Bull Sale, Tyler, Texas.
- Nov. 18-21-LMC & Friends Giving THANKS Online Sale IV
- Jan. 22 -Fort Worth Livestock Show Junior Simmental and Simbrah Show, Fort Worth, Texas
- Jan. 27-National ASA Simmental Sale-Fort Worth Livestock Show, Fort Worth, Texas
- Jan. 28-Fort Worth Livestock Show National ASA Open Simmental and Simbrah Show, Fort Worth, Texas
- Feb. 12-San Antonio Open Simmental Show, National Simbrah and National Simbrah Percentage Show, San Antonio Livestock Show, San Antonio, Texas
- Feb. 14-Simmental-Simbrah Superbowl, San Antonio, Texas.
- Feb. 15-16-San Antonio Junior Breeding Heifer Shows, San Antonio, Texas

Texas Simmental/Simbrah Association Please Contact These Progressive Breeders



**Simbrah and Simmental
Bulls For Sale**

Tim Smith, Joel Isgrig, and Haley Smith
P.O. Box 330 • 1316 PR 2231 • Giddings, Texas 78942
512/587-7896
smithgenetics1@gmail.com • www.smithgenetics.com

Knezek Simmental/Simbrah Ranch



Red and Black Show Heifers,
Bulls & Steers
**Call For Your Next Champion -
Superbowl Eligible!**
Brian Knezek
2140 Morris Community Road
Yoakum, Texas 77995
361/293-1590 Mobile
knezek@gvec.net
www.knezeksimmentalranch.com

**SOUTHERN JEWEL
CATTLE COMPANY**

Casey Buzzard & Shannon Payne
5777 McCoy Road Victoria, TX 77905
Quality Simmental and Sim-Angus Genetics
Casey | 979.215.6349 | casey@southernjewelcattle.com
Shannon | 281.960.2136 | shannon@southernjewelcattle.com
www.southernjewelcattle.com

**East Texas Simmental and
Simbrah Association**
30 Ranches & over 2,000 head of Sim-Genetics
etssa.net
Texas Oldest and Largest Simmental and Simbrah Association
The Association Built By Cattlemen For Cattlemen
Genetics That Help You Add Pounds At Weaning Time
etssa.net Stop by, give us a call and upgrade your operation.

McCrary Farms
SIMMENTAL & SIMBRAH CATTLE

Mark & Martha McCrary
903/667-5135
903/278-6819
307 North Runnels
DeKalb, Texas 75559
mamamc4@aol.com
We accept calf scramble certificates.
www.mccraryfarms.net

7N RANCH

Pete Nieschwietz
P.O. Box 303 • Falls City, Texas 78113
956/460-6002 • www.7Nranch.net
pnieschwietz@sbcglobal.net

LANGFORD'S SIMMENTALS
Our ladies have
LONG BODIES • DEEP RIBS • WIDE RUMPS
9696 CR 2470 Royse City, Tx 75189
972/636-2936

Heart of Texas
Simmental/Simbrah Association
Robert Piper, President
Cell: 830/305-4550
4pranch@gmail.com

Quality... Quantity... Integrity

Strack Farms
5465 PR 4280
Normangee, Texas 77871
281-455-5896

Stay current with TSSA
www.texassimmentalsimbrah.com
or follow us on Facebook

Texas Tales...

(Continued from page 20)

that night, "that \$6,000 Colt became a \$300,000 Colt."

And needless to say, the

fellow who offered \$6K for the wheel gun got to keep his money but not the Colt.

In this auction, held July 15, the nickel-plated, ivory-handled Colt donated by House brought \$4,100.

House is too savvy a gunman not to have gotten a factory letter first, but the buyer still got a heck of a deal.

"If you can afford to buy one," said Jim Dunham, another collector at the auction, "they're worth more money every year. I own 12 of them already. My dad gave me my first Colt for Christmas in 1958."

However, when it comes to investing in old guns, don't go off half-cocked. Given their value, there are plenty of fakes on the market. (Within the last year, a derringer supposedly given

to gunfighter Doc Holliday by his alleged girlfriend Big Nose Kate was purchased by the Glenwood Springs, Colo. Museum for \$84,000 since that's the town where Holliday died. But it was quickly determined that the small pistol had no connection whatsoever to the late Old West dentist-turned-shootist.)

Dunham, the collector with a dozen old Peacemakers, tongue-in-check noted that the famous Colt is the only firearm mentioned specifically in the Bible. You know, the line that says,

"Blessed are the peacemakers..."

The Taylor County community of Potosi is not big enough to have a whole lot of stories connected to it, but it still has a couple of interesting tales.

The first involves one John Lytle. He has the distinction of being the first known resident of the area that would come to be called Potosi. He arrived in 1870.

To set the stage, Taylor County was not even organized until 1878. When Lytle rode into that part of

the state, it lay beyond the frontier in Indian country. There were no ranches, no towns, no railroad -- only buffalo and the people who lived off them, the Comanches.

(Continued on page 30)

GILLESPIE LIVESTOCK COMPANY
Fredericksburg, Texas
Weekly Sale:
 Sheep & Goat Sale - Tuesdays, 9:30 a.m.
 Cattle - Wednesday, 12:00 noon
Special Calf & Weaned Stocker/Feeder Sale -
Second Wednesday of each month.
Gillespie Livestock Company
 Office: 830/997-4394 • Fax: 830/997-5804
 Wayne Geistweidt (C) 830/889-4394
 Shaun Geistweidt (C) 830/998-4233

www.gillespielivestock.com

Limited time...

(Continued from page 24)

results will be available on samples submitted. Donor cows and bulls do not qualify. No additional DNA tests are available with this offer.

Leoma Wells, ASA's DNA and Total Herd Enrollment (THE) Specialist, will transition from DNA Services to ASA's point person for the Cowherd DNA Roundup project. When asked about the transition, Wells says, "I am excited and grateful to be a part of this revolutionary project. It combines two of my favorite areas, DNA and data collection on females. The wheels are turning and I absolutely can't wait to get started and smash the goals we have set." In September, ASA will welcome Carolyn Wild to the DNA department to help with the daily DNA services.

Contact Wells or Jackie Atkins for more information at 406-587-4531.

SLS

Tool...

(Continued from page 24)

them right in front of me." Redbooks can be purchased for \$7.00 each, plus shipping and handling. Customization of the Redbooks is available (for 100 books or more), and quantity discounts are available. To order, visit www.beefusa.org. For more information on the NCBA Redbooks, contact Grace Webb at gwebb@beef.org, (800) 525-3085.

SLS

Value...

(Continued from page 25)

continue to grow as increases are realized in calf prices and the cost to finish cattle. Yet many producers still do not precondition calves, and are essentially leaving money on the table.

SLS

THE COWTOWN CLASSIC
 NATIONAL SIMMENTAL SALE
 Held in conjunction with the National Simmental Show

SATURDAY **JANUARY 27TH** 5:00pm
 In the West Arena

FORT WORTH STOCK SHOW & RODEO
 est. 1896

ENTRIES DUE October 15, 2017
 Entry form available online for print or submission at INNOVATIONAGMARKETING.COM

SALE CONTACTS:
 JERED SHIPMAN 806.983.7226 GRAHAM BLAGG 530.913.6418 TODD ALFORD 706.207.9454

SOUTHERN LIVESTOCK STANDARD
 210/524-9697
 Fax 210/524-9690
slivestock@southernlivestock.com