

# TEXAS SIMMENTAL/SIMBRAH NEWS

## SimGenetics wanted for National ASA Sale

The Fort Worth Livestock Show will be the home of the American Simmental Association's National Simmental, Percentage Simmental and Simbrah Show, Jan. 28th in Fort Worth. The ASA National Sale will also be held on Jan. 27th at the stock show. For additional information on the sale contact Jered Shipman at 806/983-7226. Entries in the sale will need to be entered in the show by Nov. 15, 2017. To view the premium book and see deadlines for entry visit [fwssr.com](http://fwssr.com). \*\*\*

## San Antonio and Houston Stock Shows posts premium books

The San Antonio Livestock Show and Rodeo and Houston Livestock Show and Rodeo have posted their premiums books with all the details on show dates, move in and move out dates, as well as entry deadlines online. Details can be found at [www.sarodeo.com](http://www.sarodeo.com) and [www.rodeohouston.com](http://www.rodeohouston.com).

## Two Fast Nickels Sale scheduled

The Two Fast Nickels Private Treaty Bull Sale will be held, Nov. 18th at the Black Oak Ranch, Mineola, Texas. The offering will include a group of Fullblood Fleckvieh, purebred Simmental and Simbrah bulls. For additional information visit [K5simmentals.com](http://K5simmentals.com) or call Kenneth Airheart at 903/539-1666. \*\*\*

## American Simmental Association announces cow herd DNA roundup

Bozeman, MT – The American Simmental Association (ASA) has launched a new research project in partnership with GeneSeek, Inc.®, aimed at collecting female genotypes from whole herds. The Cow Herd DNA Roundup (CHR) offers ASA members the opportunity to genotype entire cow herds at a fraction of the regular cost, with the goal of incorporating vast amounts of genomic data into the ASA genetic evaluation. Female genotypes are rare and valuable, especially to predict maternal traits such as Stayability and Maternal Calving Ease. Only genotyping the best cattle can create bias in the genomic prediction; therefore, genotyping the entire cow herd is very valuable to the genetic evaluation. Recognizing this value, the ASA Board of Trustees passed a resolution to offer a \$20 genomic profile (50K) to members who test their entire cow herd. In  
(Continued on page 19)

## State Fair of Texas Results

The Pan American Simmental and Simbrah shows at the State Fair of Texas were held on Oct. 20th with Nick Fitzsimmons serving as the judge, while the junior shows were held the following day with Drew Perez as judge. Detailed results can be found in the livestock exhibitor section at [www.bigtex.com](http://www.bigtex.com).



Hagan Joy 50D, a daughter of Hagan Shamoo, was named Pan-American Grand Champion Simbrah Female for Miranda Skaggs, Bryan, Texas. This heifer was also the reserve grand Simbrah in the junior show.



Hagan Elana 60E, a daughter of Hagan Arapaho, was named Pan American Reserve Grand Simbrah Female for owner, Madison Culpepper, Gonzales, Texas.



Golden Star Simbrah, Golden, Texas saw their entry of LMC 6G Golden Boy, a son of LMC Justice, take the Pan American Grand Champion Simbrah Bull honor.



Blaine Gibson, Paradise, Texas, exhibited the Pan-American Reserve Grand Champion Bull, GIBC Fearless, a son of Smith Born To Dare.



Allie Jordan, Comfort, Texas exhibited the Pan-American Grand Champion Simmental Female, CMFM Perfection 299D, a daughter of HPF Quantum Leap Z952.



Shandie Hamilton, Perrin, Texas, exhibited the Pan-American Reserve Grand Champion Simmental Female, FLY Queen Latifa, a daughter of Mr. HOC Broker. The heifer also was named the reserve grand heifer in the junior show.



Jaden Johnson, Blossom, Texas exhibited the Pan American Grand Champion Simmental Bull, Mr RHF Spyder Monkey.



Mackenzie Oliver, Canton, Texas, exhibited the Pan-American Reserve Grand Champion Simmental Bull, ROF Maximum Velocity, a son of W/C HOC HCC Red Answer 33B.



Mackenize Groce, Snook, Texas, saw her heifer, LMC BBS Layla, a daughter of LMC Gold Medal, take the grand champion title in the junior Simbrah Show.



Lane Hagan, Yoakum, Texas, exhibited the grand champion Simmental heifer in the junior show, HI Ms Optimizer D101, a daughter of HPF Optimizer A512.



602 FM 1652  
Grand Saline, Texas 75140  
(405) 780-0372  
[txsim@aol.com](mailto:txsim@aol.com)  
[www.texassimmentalsimbrah.com](http://www.texassimmentalsimbrah.com)

### BOARD MEMBERS

Greg Burden, president  
Casey Buzzard, vice-president  
David Grimes, treasurer  
Diane Jolly, secretary/reporter

Louis Langford  
Webb Fields  
Joe Seale  
Reese Hagan  
Jered Shipman  
Dr. Marty Tanner  
Brian Franks

# Ag Tools on the Go

*Farmers and ranchers now have a mobile tool for more easily making decisions in the field.*

By Shane Porter, Noble Research Institute

Farmers and ranchers make important production decisions out in the field every day. To help them, the Noble Research Institute has offered numerous online calculators since 2005. With technology changes, many of those original calculators no longer work on modern browsers or mobile devices. We now have a free application called "Ag Tools" that is available for both iOS and Android devices. Now farmers and ranchers can gain information while making routine decisions on the go.



The app currently offers 13 calculators:

- Body Condition Score Change
- Breeding Season
- Calving Season
- Frame Score
- Lime Application
- Pond Fish Stocking
- Supplement Conversion
- Value of Gain

- Boom Sprayer Calibration
- Boomless Sprayer Calibration
- Dry Fertilizer
- Orchard Sprayer Calibration
- Planter Calibration

The app can be downloaded from the App Store and Google Play.

# CALENDAR

- Nov. 18-Two Fast Nickels Private Treaty Bull Sale, Mineola, Texas
- Nov.18-21-LMC & Friends Giving THANKS Online Sale IV
- Jan.22 -Fort Worth Livestock Show Junior Simmental and Simbrah Show, Fort Worth, Texas
- Jan.27-National ASA Simmental Sale-Fort Worth Livestock Show, Fort Worth, Texas
- Jan.28-Fort Worth Livestock Show National ASA Open Simmental and Simbrah Show, Fort Worth, Texas
- Feb.12-San Antonio Open Simmental Show, National Simbrah and National Simbrah Percentage Show, San Antonio Livestock Show, San Antonio, Texas
- Feb.14-Simmental-Simbrah Superbowl, San Antonio, Texas
- Feb.15-16-San Antonio Junior Breeding Heifer Shows, San Antonio, Texas

## Texas Simmental/Simbrah Association Please Contact These Progressive Breeders



**Simbrah and Simmental  
Bulls For Sale**

Tim Smith, Joel Isgrig, and Haley Smith  
P.O. Box 330 • 1316 PR 2231 • Giddings, Texas 78942  
**512/587-7896**  
smithgenetics1@gmail.com • www.smithgenetics.com

**Knezek Simmental/Simbrah Ranch**

Red and Black Show Heifers,  
Bulls & Steers  
**Call For Your Next Champion -  
Superbowl Eligible!**

Brian Knezek  
2140 Morris Community Road  
Yoakum, Texas 77995  
361/293-1590 Mobile  
knezek@gvec.net  
www.knezeksimmentalranch.com



**SOUTHERN JEWEL  
CATTLE COMPANY**

Casey Buzzard & Shannon Payne  
5777 McCoy Road Victoria, TX 77905  
**Quality Simmental and Sim-Angus Genetics**  
Casey | 979.215.6349 | casey@southernjewelcattle.com  
Shannon | 281.960.2136 | shannon@southernjewelcattle.com  
www.southernjewelcattle.com



*East Texas Simmental and  
Simbrah Association*

30 Ranches & over 2,000 head of Sim-Genetics


**etssa.net**

Texas Oldest and Largest Simmental and Simbrah Association  
The Association Built By Cattlemen For Cattlemen  
Genetics That Help You Add Pounds At Weaning Time  
etssa.net Stop by, give us a call and upgrade your operation.



Mark & Martha McCrary  
903/667-5135  
903/278-6819  
307 North Runnels  
DeKalb, Texas 75559  
mamamc4@aol.com  
We accept calf scramble certificates.

**www.mccraryfarms.net**



**7N RANCH**

Pete Nieschwietz  
P.O. Box 303 • Falls City, Texas 78113  
956/460-6002 • www.7Nranch.net  
pnieschwietz@sbcglobal.net



**LANGFORD'S SIMMENTALS**

*Our ladies have*  
**LONG BODIES • DEEP RIBS • WIDE RUMPS**

9696 CR 2470 Royse City, Tx 75189  
972/636-2936



*Heart of Texas  
Simmental/Simbrah Association*

Robert Piper, President  
Cell: 830/305-4550  
[4pranch@gmail.com](mailto:4pranch@gmail.com)

**Quality... Quantity... Integrity**

**Strack Farms**  
5465 PR 4280  
Normangee, Texas 77871  
281-455-5896



**Stay current with TSSA**  
[www.texassimmentalsimbrah.com](http://www.texassimmentalsimbrah.com)  
or follow us on Facebook

## DNA...

(Continued from page 18)

In addition, members who supply cow weights with either body condition scores or hip heights receive an additional \$5 off per test. Project coordinator Leoma Wells explained the scope of the project, emphasizing the implications outside ASA. "This goes beyond our breed. This is going to impact the beef industry as a whole as we are setting the precedent for the need for female genotypes. I believe it will have a lasting impact, especially in regard to decision making for future DNA genotyping choices," Wells explains.

Initially, the program aims to collect a large number of genotypes in a small period of time-samples must be submitted to ASA by Dec. 15, 2018, and the cow weight subsidy only applies to the first 30,000 samples submitted. The overall vision of the project is to set breeders up to

(Continued on page 20)

**Inductees...**

(Continued from page 17)

been a Beefmaster breeder since 1964 and was present at the first meetings forming the Beefmaster Breeders Universal association.

Laurie Lasater and his uncle, Watt M. "Palo" Casey, are the longest members of the three Beefmaster associations. He has served on multiple committees and served as President of the Founda-

tion Beefmaster Association. He also has been a director of the Texas and Southwestern Cattle Raisers Association, as well as an elder of the First Presbyterian Church in San Angelo, Texas. He was honored as Breeder of the Year by Beefmaster Breeders United in 2000.

In 1964, after Laurie Lasater had graduated from Princeton University and finished active duty in the National Guard, he and his wife Annette moved to Mexico and introduced the Beefmaster breed into that country. They lived and

ranch on Rancho Santa Cruz near Muzuiz, Coahuila, Mexico. The Lasaters returned to the U.S. in 1972 and at that time their Santa Cruz Beefmaster herd was sold in Mexico to Guillermo

Osuna and Isidro Lopez. They have lived in San Angelo, Texas since 1972 and established the L Bar Beefmaster herd during this time. Their company Isa Cattle Co., has marketed Beefmaster females via

private treaty, developed their annual bull sales and an international frozen genetics business.

He authored the book *The Lasater Philosophy of Cattle Raising*. It was first published in 1972 and is now in its seventeenth edition in English and its second edition in Spanish. He later authored *Tail Winds Both Ways*, a memoir.

They have two married children Isabel and Lorenzo. Isabel, and her husband J.C. Hernandez, have three children and live in Katy, Texas. Their son Lorenzo Lasater, and his wife Leslie Lasater, have two sons and live in San Angelo, Texas. Laurie and Annette retired in December 2014 and at that time their children formed their own cattle business, Isa Beefmasters, LLC. The L Bar Beefmaster herd is continuing with annual bull sales, as well as female and frozen genetics sales. The BBU Hall of Fame is honored to welcome Laurence "Laurie" Lasater to this prestigious group of Beefmaster breeders.

For more information about the Beefmaster Breeders United Hall of Fame please contact the BBU office at 210-732-3132 or visit [www.beefmasters.org](http://www.beefmasters.org).

**PEARSALL LIVESTOCK AUCTION**  
 Weekly sales begin each Wednesday at 11:00 a.m.  
 Please call us if we can assist you in your livestock marketing needs. We are located outside of Pearsall on southbound Interstate 35. Take Exit 99.  
 For more information call Office: 830/334-3653  
**FRANK HELVEY** OWNER/MANAGER MOBILE: 210/213-0753 HOME: 830/426-3777  
**KELLEY THIGPEN** ASSISTANT MANAGER MOBILE: 830/334-1047 HOME: 830/334-5326

**TANK COATINGS - ROOF COATINGS**  
 Available for Metal, Composition, Shingles or Tar Roofs. Long lasting and easy to apply. We also manufacture Tank Coatings for Concrete, Rock, Steel, Galvanized and Mobile tanks. Call For Our Free Catalog.  
**VIRDEN PERMA-BILT CO.**  
 806-352-2761  
[www.virdenproducts.com](http://www.virdenproducts.com)

**BT CATTLE CO. ANNUAL PRODUCTION SALE**

November 18, 2017 • 11 a.m.

Mid-Tex Livestock Auction • Navasota, Texas



BB 1050  
Advance  
5121

| CE   | BW   | WW  | YW  | MM  | M&G | UDDER | TEAT  | SC   | FAT    | REA   | MARB  |
|------|------|-----|-----|-----|-----|-------|-------|------|--------|-------|-------|
| +3.7 | +1.4 | +44 | +61 | +28 | +50 | +1.12 | +1.13 | +0.9 | +0.021 | +0.35 | +0.13 |

**SELLING:**  
**68 Horned Hereford Bulls**

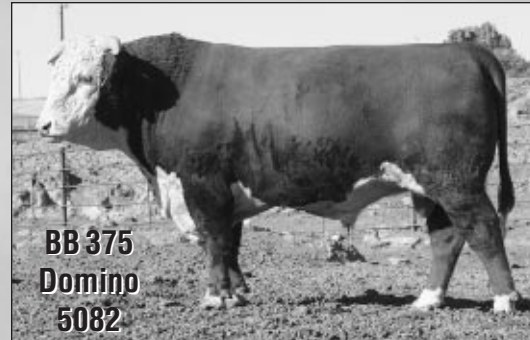
**5 Polled Hereford Bulls**

**15 Angus Bulls**

**10 Charolais Bulls**  
 (Guest consignor Bayvue Farms)

**5 FI Braford Bulls**

**52 Bred & Open Hereford Heifers**



BB 375  
Domino  
5082

| CE   | BW   | WW  | YW  | MM  | M&G | UDDER | TEAT  | SC   | FAT    | REA   | MARB  |
|------|------|-----|-----|-----|-----|-------|-------|------|--------|-------|-------|
| +1.3 | +3.5 | +51 | +75 | +30 | +55 | +1.16 | +1.21 | +1.0 | +0.020 | +0.15 | +0.14 |



BB 375  
Domino  
5093

| CE   | BW   | WW  | YW  | MM  | M&G | UDDER | TEAT  | SC   | FAT    | REA   | MARB  |
|------|------|-----|-----|-----|-----|-------|-------|------|--------|-------|-------|
| +1.6 | +3.5 | +53 | +78 | +31 | +58 | +1.14 | +1.20 | +1.1 | +0.007 | +0.23 | +0.13 |



BB 994  
Domino  
5167

| CE   | BW   | WW  | YW  | MM  | M&G | UDDER | TEAT  | SC   | FAT    | REA   | MARB  |
|------|------|-----|-----|-----|-----|-------|-------|------|--------|-------|-------|
| +0.7 | +4.4 | +49 | +75 | +22 | +46 | +1.11 | +1.11 | +0.7 | +0.008 | +0.44 | -0.07 |



BB 1050  
Advance  
5105

| CE   | BW   | WW  | YW  | MM  | M&G | UDDER | TEAT  | SC   | FAT    | REA   | MARB  |
|------|------|-----|-----|-----|-----|-------|-------|------|--------|-------|-------|
| +5.2 | +1.6 | +46 | +63 | +28 | +51 | +1.16 | +1.18 | +0.7 | +0.018 | +0.39 | +0.10 |



BB  
Thunderbird  
5033

| CED | BW   | WW  | YW  | RADG | DMI | YH | SC | DOC | HP | CEM | MILK | MKH | MW | MH | SEN    |
|-----|------|-----|-----|------|-----|----|----|-----|----|-----|------|-----|----|----|--------|
| +3  | +1.6 | +36 | +62 | -    | -   | -  | -  | -   | -  | +10 | +18  | -   | -  | -  | +11.63 |

**DNA...**

(Continued from page 19)

maintain a fully DNA tested cow herd in the future. ASA Board Member Tim Curran, Breed Improvement Committee Chairman, champions the program as a timely step to prepare for the future. "It's going to be a valuable selection tool. In the future we will have this large set of DNA on file, and as technology and accuracy improves, we will have the DNA ready," says Curran.

In addition to bolstering the genetic evaluation, parentage is included in the test, which will help clear up pedigree errors and result in better EPD predictions. The project research partner, GeneSeek, prefers the use of Tissue Sampling Units (TSU); however, blood cards will be accepted as well. Questions can be directed to Leoma Wells and Dr. Jackie Atkins, by calling 406-587-4531, or emailing [cowdna@simmgene.com](mailto:cowdna@simmgene.com). For more information, visit the CHR webpage at: <http://www.simmmental.org/chr>.



3841 FM 2782 • Nacogdoches, TX  
 btcattleco@gmail.com  
 Terry Tolbert • 936-371-9218  
 Joe Bennett • 509-551-6104



2482 Fowler Road • Herman, MO 65041  
 573-694-2697  
[www.bayvuefarms.com](http://www.bayvuefarms.com)  
[bayvuefarms@gmail.com](mailto:bayvuefarms@gmail.com)